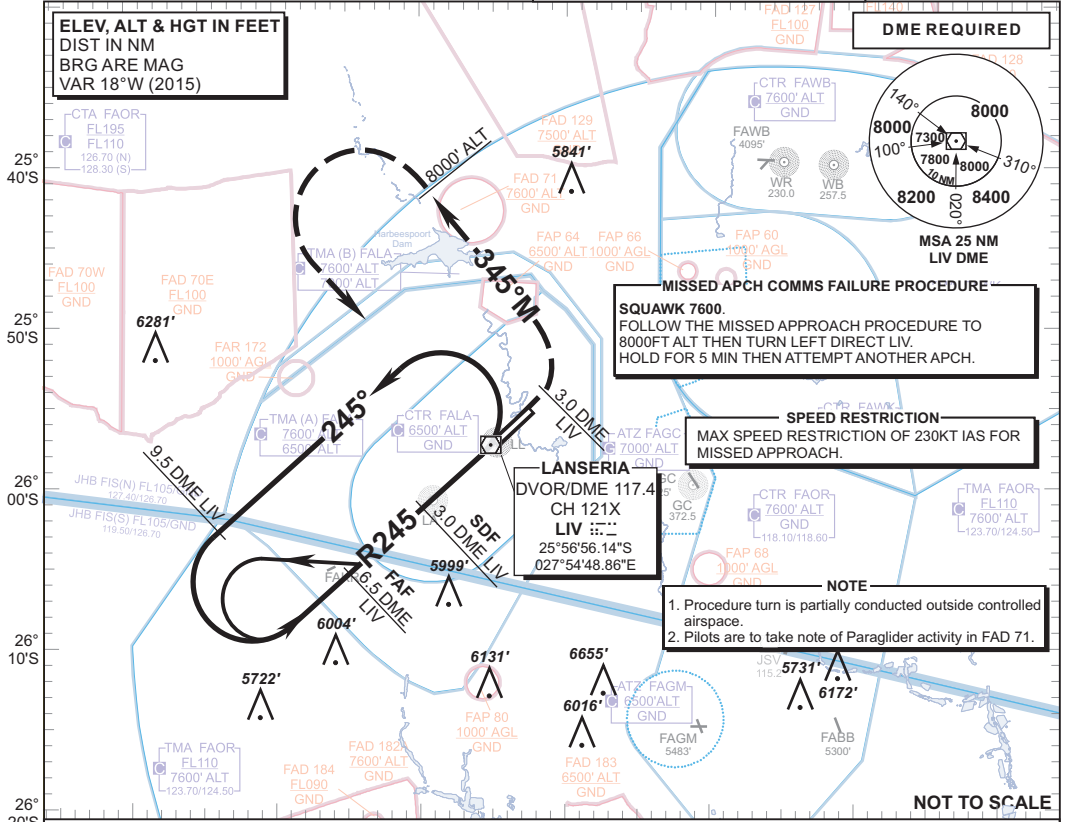


**INSTRUMENT
APPROACH
CHART**

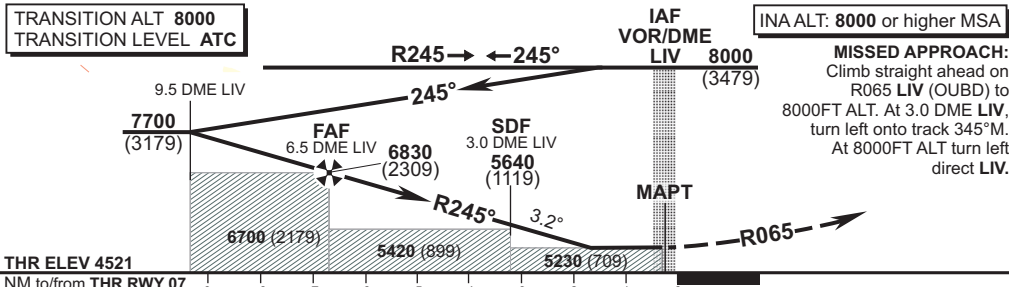
**AERODROME ELEV 4521'
HEIGHTS RELATED TO
THR RWY 07 - ELEV 4521'**

FALA APN: 122.85 JOHANNESBURG APP S: 124.50
SMC: 121.65 E: 124.50
TWR: 124.00 W: 123.70
ATIS: 127.65 SMC: 121.90

**LANSERIA INTL
VOR Y RWY 07
CAT A - D**



LIV DME	6	5	4	3	2	1	
ADVISORY ALT (HGT)	6660 (2139)	6320 (1799)	5980 (1459)	5640 (1119)	5300 (779)	5230 (709)	



THR ELEV 4521						IAF VOR/DME LIV 8000 (3479)		INA ALT: 8000 or higher MSA	
NM to/from THR RWY 07		9	8	7	6	5	4	3	2
OCA (H)		A	B	C	D	GS	KT	80	100
Straight-in Approach	With 2.5% Missed APCH Gradient	5880 (1359)				FAF to THR	M:S	4:58	3:59
	With 4.5% Missed APCH Gradient	5230 (709)				Rate of descent	FPM	455	568
Circling (HGT Related to AD ELEV)		5320 (799)	5930 (1409)	PROHIBITED		NOTE:			
						1. Rate of descent from FAF equivalent to 3.2°. 2. All circling approaches to land Southeast of RWY 07/25 and entirely at the discretion of the pilot in command. 3. CAT D circling prohibited. 4. No turns before MAPT. 5. Advise ATC of an intention to divert in the event of a missed approach.			

CHANGE: HBV Decommissioned